



**BRACKNELL FOREST  
BOROUGH COUNCIL**

**EDUCATION, CHILDREN'S SERVICES AND LIBRARIES**

**POLICY AND PROCEDURE FOR THE ASSESSMENT AND SUPPORT OF  
YOUNG CARERS AND THEIR FAMILIES**

**November 2005**

## **Contents**

<b>1. Policy</b>	<b>2</b>
1.1 Duties	
1.2 Definition of Young Carers	2
1.3 Exceptions	2
<b>2. Legislation and Guidance</b>	<b>2</b>
2.1 Key Legislation	2
2.2 Guidance	3
<b>3. Procedure</b>	<b>3</b>
3.1 Initial Identification	3
3.2 Determining Eligibility	3
3.3 Community Care Services	3
3.4 Children who Foster	4
3.5 Siblings of Disabled Children	4
3.6 Direct Support for Young Carers in Bracknell Forest	4
<b>6. Monitoring and Evaluation</b>	<b>5</b>
<b>7. References</b>	<b>5</b>
<b>Appendix One – Eligibility Checklist</b>	<b>6</b>
<b>Appendix Two – Flow Chart: Procedure for the Referral and Assessment of Young Carers</b>	<b>8</b>
<b>Appendix Three – Guidance for Professionals</b>	<b>9</b>











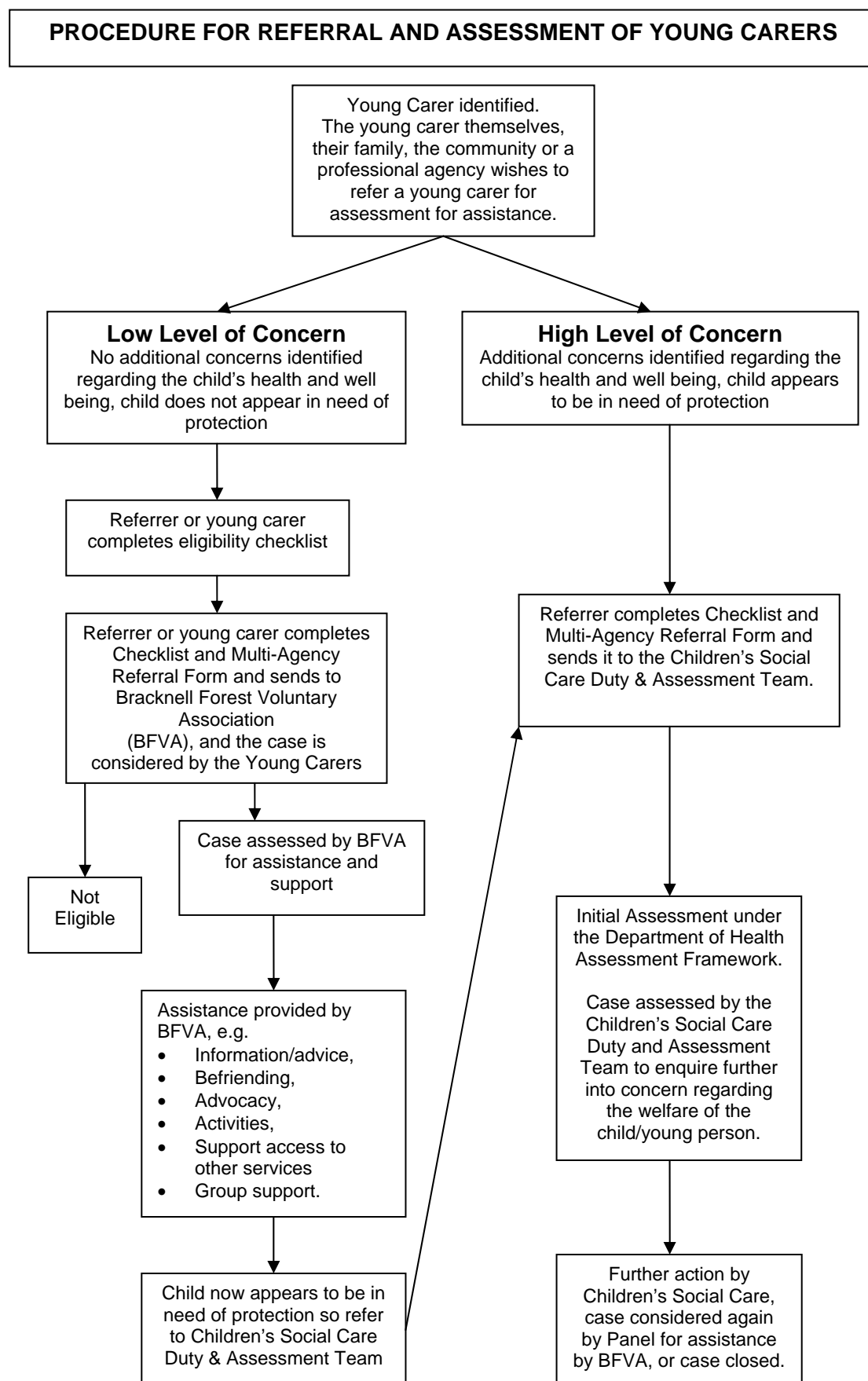
<b>Physical Care</b>	
7) Do the caring tasks involve nursing care?	Yes/No
8) Does the care provided include personal care, e.g. washing, bathing and/or toileting?	Yes/No
<b>Mental Health</b>	
9) If the young carer assists an adult family member with a mental health problem do they take a direct responsibility for that individual's safety and well being?	Yes/No
10) Is the young carer actively supervising the adult?	Yes/No
<b>Impact on the Child/Young Person</b>	
11) Do you believe that caring role has a significant adverse affect on the young carer's ability to benefit from education?	Yes/No
12) Do you believe that caring role adversely affects the young carer's ability to participate in social activities to the extent that it may be affecting their development?	Yes/No

**If you have answered Yes to 6 or more of these questions then you should make a referral to Bracknell Forest Voluntary Action (BFVA). However, please note that the checklist is for guidance only. If the case about which you are concerned does not score 6 or more on the checklist, but you still believe that the child or young person about whom you are concerned is a young carer and meets the statutory criteria for assessment as outlined in section 2.1 above of the main policy document, then please discuss the case with BFVA.**

**To make a referral complete the Multi-Agency Referral Form and send it to Bracknell Forest Voluntary Action, 5<sup>th</sup> Floor, Fitzwilliam House, Skimped Hill Lane, Bracknell RG12 1JX. Telephone 01344 304404, or email [info@bfva.org](mailto:info@bfva.org).**

**Similarly if there are additional and/or urgent concerns about a child or young person who is deemed a young carer, consideration must be given as to whether the Children's Social Care eligibility criteria is met and a referral to the Children's Social Care Duty and Assessment Team ( 01344 351582 ) is warranted.**

## Appendix Two



## **Appendix Three**

### **Guidance for Professionals**

#### **The Views of Young Carers**

Key priorities as expressed nationally by young carers themselves are;

- To recognise their roles and stresses,
- To support the people they care for adequately so that they do not take on too much responsibility,
- To ensure that professionals understand the issues so that they can support them inclusively alongside other family members, and to help dispel any stigma associated with their caring role.

#### **Cultural Issues**

Factors which influence the extent and nature of young carers' tasks and responsibilities include illness or disability, family structure, gender, culture, religion, income, and the availability and quality of professional support and services. For instance young carers providing care for adult relatives across gender and age boundaries will need to be assessed and advised carefully, and it may be necessary to take specific steps to ensure that their welfare is adequately safeguarded.

The Children's Society Young Carers' Initiative advise that young carers from Black and Minority Ethnic communities (BME) communities may experience racial discrimination as well as discrimination due to disability or illness, and may also face cultural interpretations of illness and disability, which may manifest as discrimination or an unwillingness to understand or accept disability. Young carers' lives should be understood from their own cultural perspective.

#### **Assessment Action List**

An assessment of a young carers needs must include the following actions:

- Listening to the child or young person, respecting their views, and giving time and privacy to children who may need this in order to talk about their situation,
- Considering fully what needs the child has arising from caring responsibilities,
- considering whether the caring responsibilities are restricting the child's ability to benefit from his/her education,
- considering whether the child's emotional and social development are being impaired,
- providing information on the full range of relevant support services,
- acknowledging that this is the way the family copes with the disability or illness of a family member,
- acknowledging parents' strengths and beware of undermining parenting capacity,
- considering what is needed to assist the parent in their parenting role,

**Alex Walters**

**Assistant Director, Children's Social Care**

**November 2005**