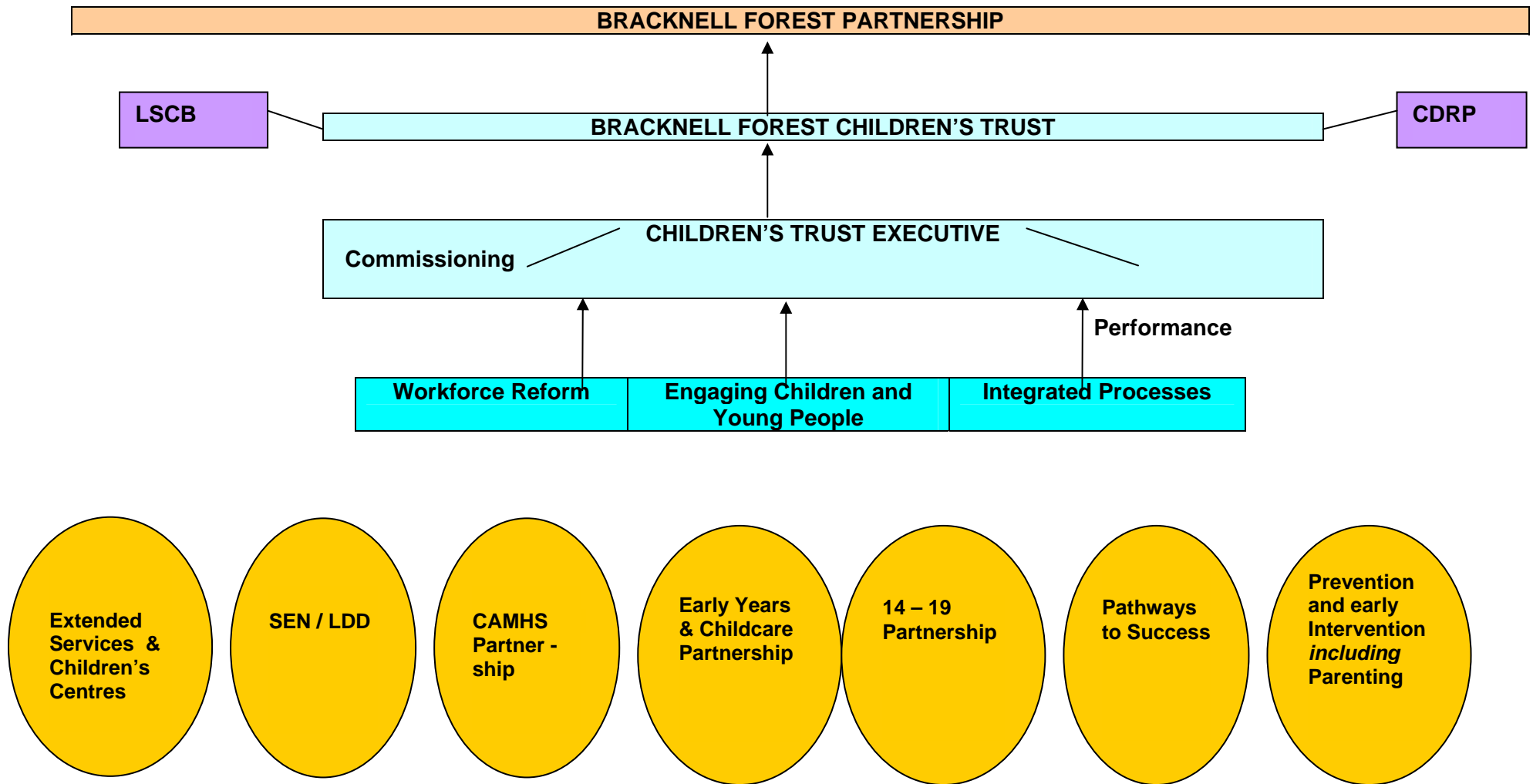
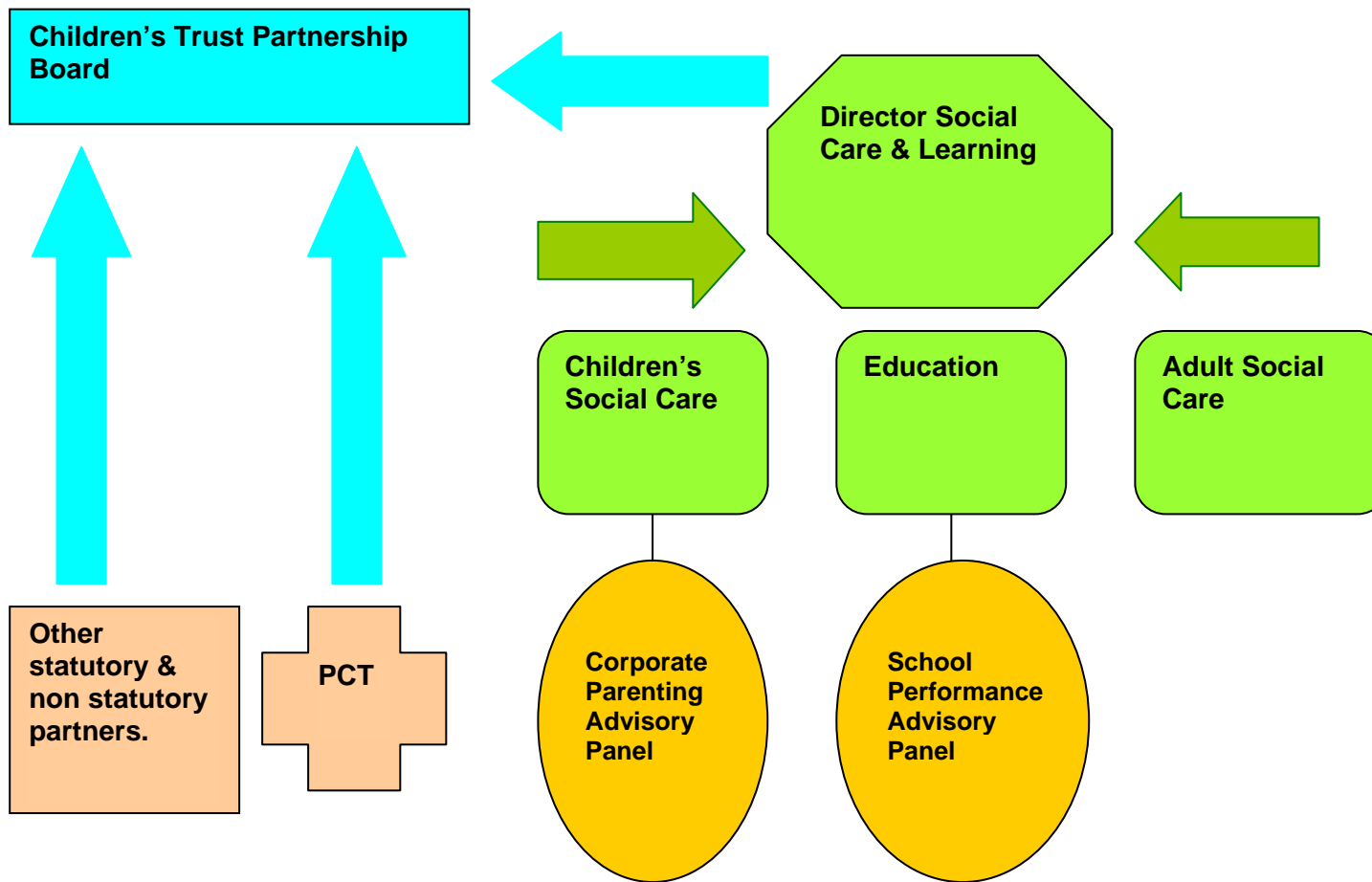


Guidance notes to support the Children's Trust Model.

1. The **Bracknell Forest Partnership** is the overarching partnership for the Council and is responsible for the Sustainable Community Strategy and for the Local Area Agreement process and monitoring. It has a number of themed partnerships of which the Children and Young People's Strategic Partnership [to become the Children's Trust Board] is one.
2. The **Children's Trust** is all of those organisations in the statutory sector in the local area who are under a duty to cooperate to improve outcomes for children and young people along with voluntary sector organisations.
3. The **Children's Trust Board** provides the overarching vision and approval of plans, policies and strategies. It represents the voice of children, young people and families at partnership level and will ensure that outcomes for children and young people and families remain at the centre of partnership working and delivery. [see Terms of Reference, Annex 3]. It has membership at a senior level and includes young people amongst its members. The Board is supported through the attendance of a number of other officers from relevant organisations [see Membership, Annex 4]. The Board is chaired by the Executive Member for Children's Services.
4. The **Children's Trust Executive** is responsible for undertaking and achieving the priorities identified by the Children's Trust Board as agreed through the Children and Young People's Plan. It steers the flow of business through the Board. This includes taking responsibility for commissioning of services and for performance monitoring as key mechanisms supporting the Children's Trust. [see Terms of Reference and Membership, Annex 5]
5. **Three groups** directly under the Children's Trust Executive represent significant building blocks of a Children's Trust. Each group has a key role to play in the way in which the workforce develops, the way in which children and young people are involved in decision making, and the integrated processes to support multi-agency working [e.g. CAF, Information Sharing].
6. **Seven groups** represent the strong multi-agency link between strategy and operational delivery. Each group / partnership is multi-agency and will inform strategy through identifying needs, commissioning services and monitoring performance.
7. **Core service** delivery will remain accountable to the responsible authority. There will be accountability to the Children's Trust through the Director of Social Care and Learning [in the case of the local authority] and through senior managers in partner organisations. Where partnership working is seen as crucial to the delivery of core services this will be identified and taken to the Children's Trust Partnership Board for inclusion in core plans and activities.





BRACKNELL FOREST CHILDREN'S TRUST

Terms of reference

The Children's Trust provides the overarching vision and approval of plans, policies and strategies. It represents and reflects the voice of children, young people and families at partnership level and will ensure that outcomes for children, young people and families remain at the centre of partnership working and delivery.

Its responsibilities are to:

1	Act as the governing board for the Children's Trust Executive and interagency co-operation arrangements
2	Ensure the vision for children and young people in Bracknell Forest is regularly reviewed and implemented
3	Work collaboratively under Section 10 [Duty to Cooperate] of the Children Act 2004 to improve outcomes for children and young people
4	Agree the priorities for inter-agency children's services development, sign off and monitor the Children and Young People's Plan
5	Engage and consult the community, including children and young people, in achieving the ongoing objectives of the partnership.
6	Facilitate collaboration between agencies through joint commissioning and pooling of budgets where appropriate.
7	Monitor and evaluate the impact of services and outcomes / improvements for children and young people.
8	Hold the Children's Trust Executive accountable for the planning and delivery of strategic goals.
9	Report to the Bracknell Forest Partnership and liaise with other partnerships, this includes the Crime and Disorder Reduction Partnership, and the Local Safeguarding Children's Board.
10	Ensure that all service delivery meets the requirements of Section 11 of the Children Act 2004 in relation to safeguarding, and to receive regular scrutiny reports from the LSCB on conformance to safeguarding.
11	To ensure services work collaboratively to support integrated workforce development.

CHILDREN'S TRUST MEMBERSHIP

<i>Bracknell Forest Borough Council</i>
Executive Member for Children's Services (<i>chair</i>)
Executive Member for Education and Libraries
Leader of the Opposition or representative (elected member)
Executive Director Social Care and Learning
Chief Officer - Children's Social Care
Chief Officer - Access and Inclusion
Chief Advisor – Learning and Achievement
Youth Offending Service Manager
Head Teacher Primary School (x2)
Head Teacher Special School
Head Teacher Secondary School
Environment and Leisure representative
<i>NHS Organisations</i>
Assistant Director Locality Development Berkshire East PCT
Director of Commissioning Berkshire East PCT
Community Paediatrician, Berkshire East PCT
Assistant Director Children and Young People Berkshire East PCT
<i>Other Community Organisations</i>
Representative of the Voluntary Sector (x2)
Representative of Bracknell Forest Voluntary Action [BFVA]
Representative of Independent Providers
Representative of Bracknell Forest Youth Forum (x2)
<i>Other Agencies</i>
Chairman of the Local Safeguarding Children Board (if not included above)
Connexions Partnership Manager
Representative of Berkshire Learning and Skills Council
TVP Local Area Commander or representative
Representative of Bracknell & Wokingham College

CHILDREN'S TRUST EXECUTIVE

Terms of Reference

The Executive of the Bracknell Forest Children's Trust is responsible for undertaking and achieving the priorities identified by the Children's Trust Partnership Board as agreed through the Children and Young People's Plan.

Its responsibilities are to:

1	Support and make recommendations to the Children's Trust Partnership Board in order to achieve the business of a Children's Trust.
2	Undertake and review on a regular basis an analysis of need to inform local priorities and planning.
3	Be responsible for the comprehensive data collection and reporting arrangements for children's services consistent with the national indicator set and national inspection requirements.
4	Lead the strategic development of joint commissioning and pooled budget arrangements.
5	Take responsibility for the production of the Children and Young People's Plan in line with Government guidance
6	Take responsibility for the monitoring and reporting of progress of the Children and Young People's Plan
7	Foster and embed ongoing partnership development.
8	Oversee multi-agency Inspection preparation [e.g. APA]
9	Liaise with the Local Safeguarding Children's Board and other key Partnership Groups to promote improved outcomes for children and young people.
10	Provide strategic input to plan and manage the agenda for the Children's Trust Partnership Board
11	Be responsible for commissioning and monitoring the working groups supporting the work of the Children's Trust.

Membership – Children's Trust Executive

<i>Bracknell Forest Borough Council</i>
Executive Member Children's Services
Director Social Care and Learning (<i>chair</i>)
Chief Officer: Access and Inclusion
Chief Officer: Children's Social Care
Chief Adviser: Learning and Achievement
Representative Headteacher
Children's Trust Business Manager
<i>Berkshire East PCT</i>
Assistant Director Locality Development PCT
PCT – Provider representative
Commissioning Manager PCT
<i>Other Organisations</i>
Connexions Partnership Manager
Voluntary Sector Representative